

# Columbiana County



2023 – 2025  
Community Health  
Improvement Plan

Published February 2023

# Table of Contents

Executive Summary .....	4
Introduction .....	4
Hospital Requirements .....	4
Public Health Accreditation Board (PHAB) Requirements.....	5
Mobilization for Action through Planning and Partnerships (MAPP).....	5
Definition of Health and Healthy Communities.....	6
Definition of Community and Service Area Determination.....	6
Columbiana County Profile.....	7
Community Need, Access and Inclusion of Vulnerable Population(Health Disparities).....	8
Top Ten Highest Needs in Columbiana County.....	8
Community Need Index-Columbiana County.....	9
Alignment with National/State Standards.....	9
Healthy People 2030 Referenced.....	9
Ohio State Health Improvement Plan (SHIP).....	10
2023-2025 Columbiana CHIP Alignment with 2020-2022 SHIP.....	11
SHIP Framework .....	12
Vision and Mission.....	13
Columbiana County Health Partners.....	13
Community Health Improvement Plan Process.....	14
MAPP Assessments: Community Health Status Assessment.....	15
(continued).....	16
Gap Analysis and Evidence-based Practices.....	17
Columbiana County Health Improvement Plan Templates.....	17
Community Conditions.....	18
* Priority #1 Chronic Absenteeism (K-12 Students Success) .....	18
* Priority #2 Adverse Childhood Experiences .....	19
Nutrition.....	20
* Priority #3 Youth Fruit and Vegetable Consumption.....	20
(Templates -Continued).....	21

Mental Health and Addiction.....21

- \* Priority #4 Youth Suicide Deaths.....21
- \* Priority #5 Adult Suicide Deaths.....22
- \* Priority #6 Unintentional Drug Overdose Deaths.....23

Health Behaviors.....24

- \* Priority #7 Chronic Disease.....24

Progress and Measuring Outcomes Summation.....25

Appendix I: Links to Websites.....26

Appendix II: Resource Inventory.....27-39

***Note: Throughout the report, hyperlinks will be highlighted in bold, gold text. If using a hard copy of this report, please see Appendix I for links to websites.***

# Executive Summary

## Introduction

The Public Health Accreditation Board (PHAB) defines a community health improvement plan (CHIP) as a community-driven, long-term, systematic plan to address issues identified in a community health needs assessment (CHNA). The purpose of the CHIP is to describe how hospitals, health departments, and other community stakeholders will work to improve the health of the county. A CHIP is designed to set priorities, direct the use of resources, and develop and implement projects, programs, and policies. The CHIP is more comprehensive than the roles and responsibilities of health organizations alone, and the plan's development must include participation of a broad set of community stakeholders and partners. This CHIP reflects the results of a collaborative planning process that includes significant involvement by a variety of community sectors.

Members of the Columbiana County Health Partners have a proven history of collaborating to address community health needs and have jointly completed five CHNAs together since 2010. With the completion of Columbiana County's 2022 CHNA and 2023 CHIP, the workgroup moved into alignment with the state of Ohio's mandate by law (ORC3701.981) that all hospitals must collaborate with their local health departments on community health assessments and community health improvement plans. Compliance with this state mandate has continued into the completion of the 2022-2025 CHNA and 2023-2025 CHIP.

The Health Districts in Columbiana County invited various community stakeholders to participate in the community health improvement process. The Columbiana County CHNA was utilized as a vital tool for creating the County's CHIP. Data from the most recent CHNA was carefully considered and categorized into community priorities with accompanying strategies. This was done using the National Association of County and City Health Officials' (NACCHO) national framework, Mobilizing for Action through Planning and Partnerships historical (MAPP) 1.1 and revised 2.0 process. Over the next three years, these priorities and strategies will be implemented at the county-level with the hope to improve population health and create lasting, sustainable change. It is the hope of The Columbiana County Health Partners that each agency in the county will tie their internal strategic plan to at least one strategy in the CHIP.

## Hospital Requirements

The Columbiana County CHNA and CHIP fulfills national mandated requirements for hospitals in the county. The H.R. 3590 Patient Protection and Affordable Care Act, Public Law 111-148 (the "Affordable Care Act" or ACA), enacted in March 2010, created section 501(r) requirements in Part V, Section B, adding new requirements beginning with the first tax year on or after March 23, 2012; which state that 501(c)(3) hospitals must conduct a CHNA at least once every three years in order to assess community need and annually file information by means of Schedule H (Form 990), regarding progress toward addressing identified needs. Each hospital is then required to adopt implementation strategies in a written plan at least once every three years, based on the findings of the most recent CHNA. Selected strategies recommended in the Columbiana County 2023-2025 CHIP will be incorporated into each hospital's respective Implementation Plan.

## Public Health Accreditation Board (PHAB) Requirements

Strong connections between health care providers, public health departments and community-based prevention organizations are critical for improving population health. In December 2013, to foster integrated population health planning activities, the Public Health Accreditation Board (PHAB) published its "Standards & Measures," requiring local health departments to complete a Community Health Assessment (CHA) and Community Health Improvement Plan (CHIP) at least every five years via collaborative community partnerships. In 2016, Ohio enacted additional reporting requirements for tax-exempt hospitals and local health departments to submit their assessments and plans to the state by 2017; and further requires local health departments to apply for PHAB accreditation, which includes the submission of a community-driven CHA and CHIP.

In addition, PHAB highly recommends that national models of methodology are utilized in compiling CHAs and CHIPs. The 2022 Columbiana County CHNA/CHA and 2023-2025 CHIP were completed using the National Association of County and City Health Officials (NACCHO) Mobilizing Action through Partnerships and Planning (MAPP) process. MAPP is a community-driven planning process for improving community health.

## Mobilizing for Action through Planning and Partnerships (MAPP)

NACCHO's strategic planning tool (MAPP), guided this Community Health Improvement Plan process. Taking the basic principles of the MAPP 1.1 version, used to compile the 2022 CHNA, and utilizing the proposed \*(August 2022) MAPP Field Needs and Redesign Solutions in developing the new 2.0 (MAPP) version, the community partners closely followed the guidelines to influence and develop the 2023-2025 CHIP.

<b>Figure 3: Alignment Across Revised and Historical MAPP Phases</b>	
<b>Historical MAPP Framework</b>	<b>Revised MAPP Framework</b>
Phase 1: Organize for Success Phase 2: Visioning	Phase 1: Build the CHI Foundation
Phase 3: Conduct the Assessments <ul style="list-style-type: none"> <li>• Community Health Status</li> <li>• Local Public Health System</li> <li>• Community Themes and Strengths</li> <li>• Forces of Change</li> </ul>	Phase 2: Tell the Community Story <ul style="list-style-type: none"> <li>• Community Status</li> <li>• Community Partner</li> <li>• Community Context</li> </ul>
Phase 4: Identify Strategic Issues Phase 5: Develop Goals & Strategies Phase 6: The Action Cycle	Phase 3: Continuously Improve the Community

\*Source: MAPP Evolution Blueprint Executive Summary November 2020

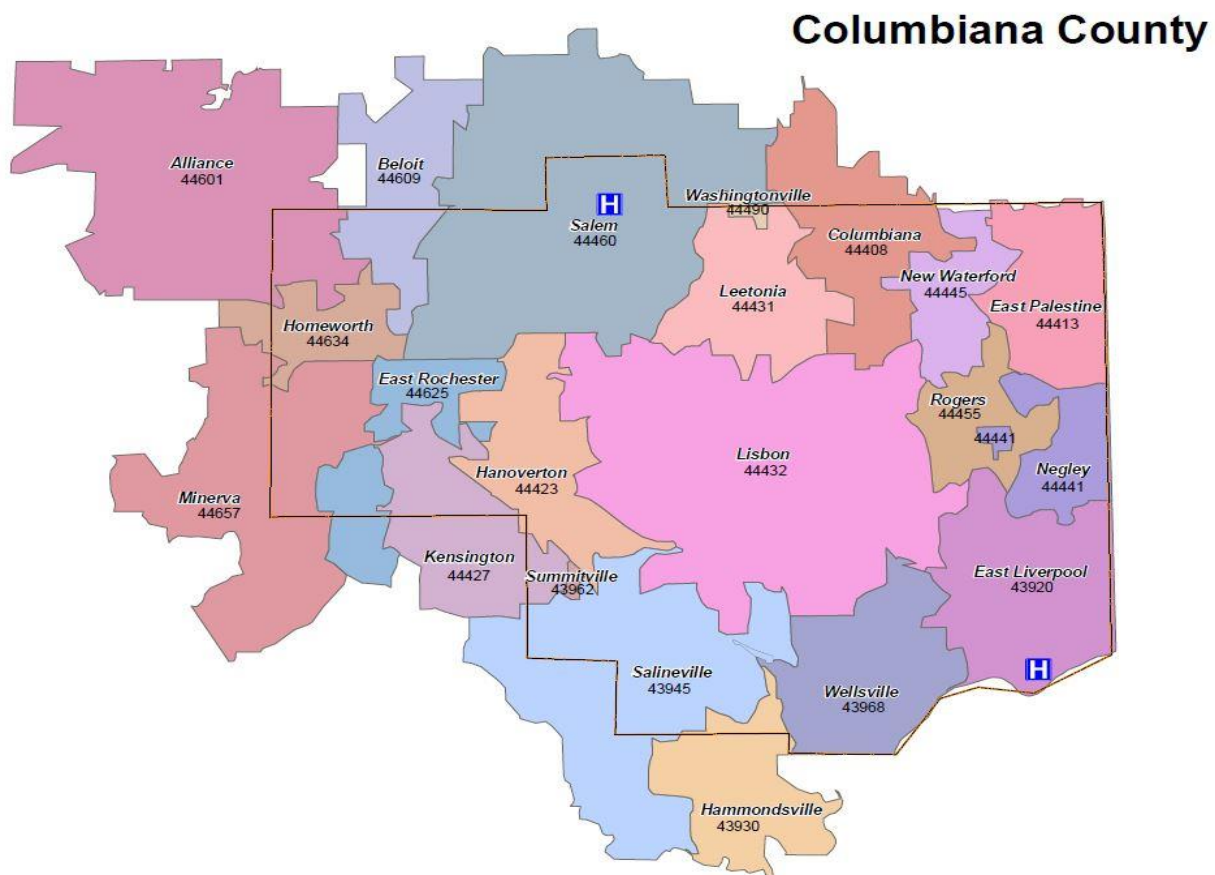
## Health in our Communities

Columbiana County Health Partners defines “Health” as the state of physical, mental, and social well-being and a “Healthy Community” as one that promotes and supports quality healthcare, good nutrition, access to physical activities, healthy homes, and safe environments for all residents; guided by health equity values in program development and policy-making processes.

### DEFINITION OF “COMMUNITY” AND SERVICE AREA DETERMINATION:

In accordance with IRS and Public Health Accreditation Board (PHAB) guidelines, the Columbiana County Health Partners’ workgroup defined the CHNA’s “community” as Columbiana County, Ohio; by geographic location based on the shared primary service area of the workgroup. Columbiana County includes the zip codes listed in the following table and as illustrated in the following map.

43920	East Liverpool	44413	East Palestine	44432	Lisbon	44460	Salem
43945	Salineville	44423	Hanoverton	44441	Negley	44490	Washingtonville
43968	Wellsville	44427	Kensington	44445	New Waterford	44625	East Rochester
44408	Columbiana	44431	Leetonia	44455	Rogers	44634	Homeworth



**Figure 1**

Note that zip code and census tract specific data were identified when feasible for the East Liverpool City Health District (jurisdiction within the city limits and includes a portion of the 43920-zip code), Salem City Health District (jurisdiction within the city limits and includes a portion of the 44460-zip code) and the Columbiana County General Health District (all other geographic areas in Columbiana County). In most cases, the variability of the data amongst Columbiana County residents is minimal; therefore, is not mentioned with specific findings attributable to Salem City and East Liverpool unless noted. In addition, there were many times where no city level data was available.

## Columbiana County Profile:

Located in northeastern Ohio, Columbiana County is one of Ohio's 32 Appalachian counties. Over half of the county's total population of 101,877 lives in unincorporated rural areas, with villages and towns some distance apart. The county has two, major geographic concentrations of development and population. The northern corridor between the city of Salem and village of East Palestine, (including the villages of Washingtonville, Leetonia, Columbiana, and New Waterford and the four townships of Perry, Salem, Fairfield, and Unity); extends along a 20-mile distance bordering Mahoning County to the north and contains almost one-half of the county's population. The southern corridor extends for about 10 miles from the village of Wellsville to the city of East Liverpool, (including St. Clair Township) and contains a little over 10% of the county's total population. The county shares an eastern border with Pennsylvania and a southern border with West Virginia.

**-Age/Disability:** Since 2000, the County's population has decreased slightly each year. Columbiana County is ranked 27 out of 88 counties for population, and 13 out of 88 for highest median age. Compared to the State of Ohio, Columbiana County has a smaller proportion of children (under 18 years old=20.5% vs. Ohio 22.4%) and a higher proportion of older adults (65 years and older=19.8% vs. Ohio=17.5%). The overall disability status of the County's civilian, non-institutional population is 15.96%.

**-Race/Ethnicity:** According to the U.S Census Bureau's 2019 ACE 1-year estimates, the County's percentage of the non-White population at 6.1% is significantly lower than Ohio's at 20.2%. However, the County has experienced a significant increase in residents who do not speak English as their primary language. The 2017 U.S. Census estimates that there are 2.0% African Americans, 1.8% Hispanic or Latinos of any race and 0.8% Asian population. Note that the local workforce, social service, and faith-based organizations estimate that there has been a 30% county population growth rate over the last 10 years for the Hispanic/Latino ethnic group. Sampling estimates obtained approximately 5 years ago from a third-party source through the Ohio Rural Immigrant Worker Project (IWP) indicate that the approximate amount is about 3,464 Hispanics, with a 775% growth rate projected from the past 10 years. Based on these estimates, Hispanics represent between 3-4% of the county's population and are identified as a rapidly growing and medically vulnerable population.

**-Language:** The primary language spoken in Columbiana County is English, followed by German (Pennsylvania Dutch), a Guatemalan dialect of Spanish (especially within the Salem City Health District) and Korean. In addition, the Amish represent a significant but non-quantifiable sub-set of this population.

**-Education/Income:** The educational attainment of a high school diploma or higher is similar in Columbiana County (89.3%) compared to the State of Ohio (90%); however, there is a significant disparity between those in the County having some college education (52%) compared to Ohio (66%). Similarly, annual per capita income in the County (\$26,468) is significantly lower than the State of Ohio (\$31,552); and the percentage of Columbiana County families living at or below the poverty level is 13.9%, compared to 9.9% in the State of Ohio. Children living in poverty are 18% vs Ohio at 10%. Median household income is \$52,700 compared to Ohio at \$72,900.

Poverty Indicators	Ohio	Columbiana County
Median Household income (2021)	\$58,700	\$52,700
Children eligible for free or reduced- price lunch (2021)	36%	48%
Poverty rate (2019)	14%	14.3%

(Source: RWF County Health Rankings-2021, U.S. Census 2019 ACES 5-Year Survey)

## Community Need, Access & Inclusion of Vulnerable Populations (Health Disparities)

According to the National Institutes of Health, vulnerable populations include those who are racial or ethnic minorities, children, elderly, socioeconomically disadvantaged, underinsured or those with certain medical conditions. Members of vulnerable populations often have health conditions that are exacerbated by unnecessarily inadequate health care.

Based on the demographics of Columbiana County’s population and for the purposes of the CHNA and CHIP, the Partners’ workgroup has identified the vulnerable populations as being those living in poverty/socioeconomically disadvantaged, the Appalachian culture, children/youth, the elderly, and those facing ethnic and literacy barriers.

Approximately 14.3% of Columbiana County residents were below the poverty line, according to the Robert Wood Johnson foundation County Health Rankings-2021, U.S. Census 2019 ACES 5-YEAR Survey.

Dignity Health, a California-based hospital system, developed and published a Community Need Index™ (CNI) that measures barriers to health care access. The index is based on five social and economic indicators, which are typically experienced by vulnerable populations at higher levels and may contribute to increased health disparities and inequities:

- **Income Barrier:** The percentage of elders, children and single parents living in poverty.
- **Cultural Barrier:** The percentage of the population over the age 25 with limited English proficiency, and the percentage of the population that is non-White.
- **Education Barrier:** The percentage of the population over age 25 without a high school diploma
- **Insurance Barrier:** The percentage of uninsured and unemployed residents over age 16.
- **Housing Barrier:** The percentage of the population renting houses.

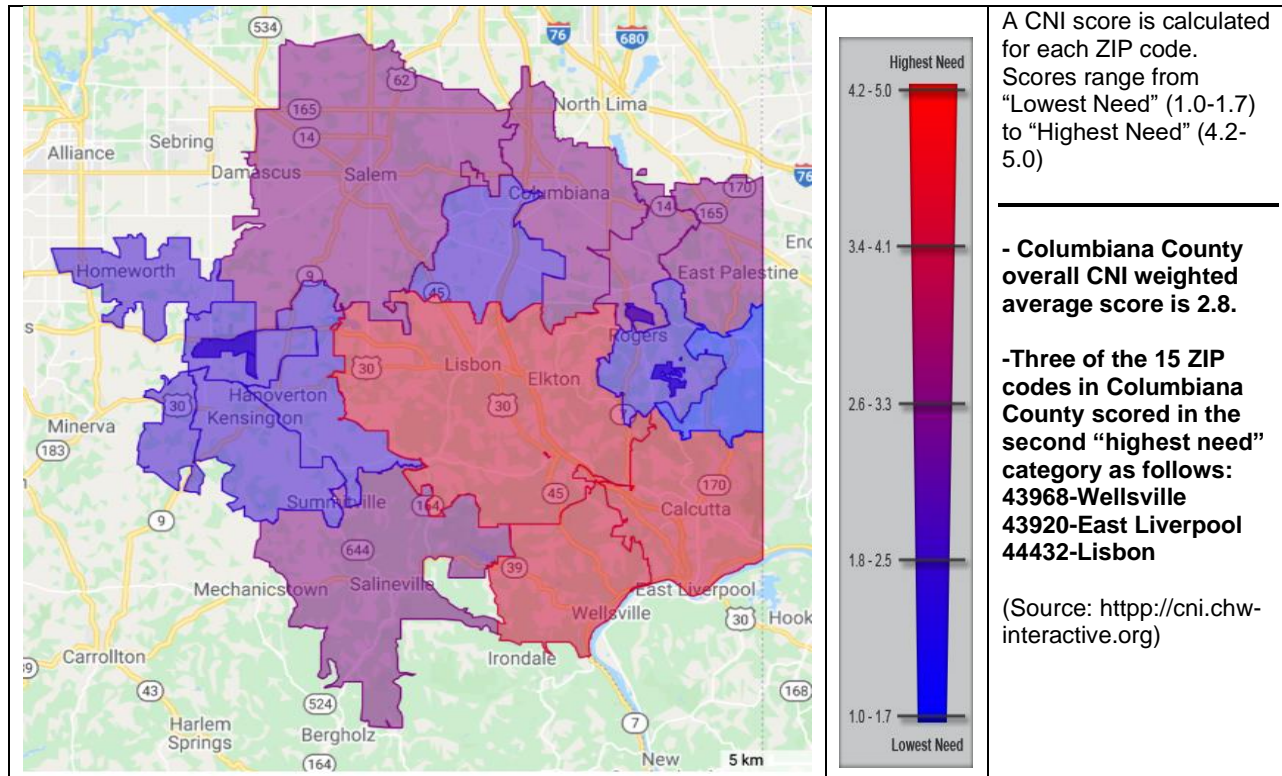
**Figure 2: Top 10 Highest Need Areas in Columbiana County, OH (2020 Community Need Index Data)**

City/Region	Associated Zip Code	CNI Score (1.0 to 5.0)
Wellsville	43968	3.8
East Liverpool	43920	3.4
Lisbon	44432	3.4
Salineville	43945	3
New Waterford	44445	2.8
Salem	44460	2.8
Columbiana	44408	2.6
East Palestine	44413	2.6
Washingtonville	44490	2.6
Kensington	44427	2.2

**Data Source: Dignity Health (2020). Community Needs Index Interactive Map. Retrieved October 2021 from <http://cni.dignityhealth.org>**



**Figure 3: Community Need Index- Columbiana County, Ohio**



**Data Source: Dignity Health (2020). Community Needs Index Interactive Map. Retrieved October 2021 from <http://cni.dignityhealth.org>**

## Alignment with National and State Standards

The 2023-2025 Columbiana County CHIP priorities align with state and national priorities. The Columbiana County Health Partners will be addressing the following priority factors: *community conditions and health behaviors*. The Columbiana County Health Partners will be addressing the following priority health outcomes: *mental health and addiction, nutrition and chronic disease*.

## Healthy People 2030

Columbiana County’s priorities also fit specific Healthy People 2030 goals: for example:

- Mental Health and Mental Disorder (MHMD) – 01: Reduce the suicide rate.
- Heart Disease and Stroke (HDS) – 01: Improve cardiovascular health in adults.

Please visit **Healthy People 2030** for a complete list of goals and objectives.

## Ohio State Health Improvement Plan (SHIP)

The 2020-2022 State Health Improvement Plan (SHIP) serves as a strategic menu of priorities, objectives, and evidence-based strategies to be implemented by state agencies, local health departments, hospitals and other community partners and sectors beyond health including education, housing, employers, and regional planning.

The SHIP includes a strategic set of measurable outcomes that the state will monitor on an annual basis. Given that the overall goal of the SHIP is to improve health and wellbeing, the state will track the following health indicators:

- Self-reported health status (reduce the percent of Ohio adults who report fair or poor health)
- Premature death (reduce the rate of deaths before age 75)

The SHIP also takes a comprehensive approach to improving Ohio's greatest health priorities by identifying 3 priority factors (community conditions, health behaviors, and access to care) that impact the 3 priority health outcomes (mental health and addiction, chronic disease, and maternal and infant health).


The three priority factors include the following:

1. **Community Conditions** (includes housing affordability and quality, poverty, K-12 student success, and adverse childhood experiences)
2. **Health Behaviors** (includes tobacco/nicotine use, nutrition, and physical activity)
3. **Access to Care** (includes health insurance coverage, local access to healthcare providers, and unmet needs for mental health care)

The three priority health outcomes include the following:

1. **Mental Health and Addiction** (includes depression, suicide, youth drug use, and drug overdose deaths)
2. **Chronic Disease** (includes conditions such as heart disease, diabetes, and childhood conditions [asthma and lead])
3. **Maternal and Infant Health** (includes infant and maternal mortality and preterm births)

The 2023-2025 Columbiana County CHIP is required to select at least 1 priority factor and 1 priority outcome indicator. Also at least 1 indicator for each identified priority factor and 1 strategy for each selected priority to align with the 2020-2022 SHIP.

Note: This symbol  will be used throughout the report when a priority, indicator, or strategy directly aligns with the 2020-2022 SHIP. Whenever possible, the Columbiana County CHIP identifies strategies likely to reduce disparities and inequities. This symbol ✓ will be used throughout the report when a strategy is identified as likely to reduce disparities and inequities. Throughout the report, hyperlinks will be highlighted in **bold, gold text**.

The following Columbiana County priority factors, priority indicators, and strategies very closely align with the 2020-2022 SHIP:

**Figure 4: 2023-2025 Columbiana CHIP Alignment with the 2020-2022 SHIP**

Priority Factors	Priority Indicators	Strategies to Impact Priority Indicators	Additional Aligned Strategies
<b>Community Conditions</b>	<ul style="list-style-type: none"> <li>Chronic Absenteeism</li> <li>Adverse Childhood Experiences</li> </ul>	<ul style="list-style-type: none"> <li>Attendance interventions for chronically absent students</li> <li>Supports for system-involved children and youth</li> </ul>	
<b>Health Behaviors</b>	<ul style="list-style-type: none"> <li>Youth fruit consumption</li> <li>Youth vegetable consumption</li> </ul>	<ul style="list-style-type: none"> <li>Healthy meals served at school</li> </ul>	
Priority Health Outcomes	Priority Indicators	Strategies to Impact Priority Indicators	Additional Aligned Strategies
<b>Mental Health and Addiction</b>	<ul style="list-style-type: none"> <li>Youth suicide Deaths</li> <li>Adult Suicide Deaths</li> <li>Unintentional drug overdose deaths</li> </ul>	<ul style="list-style-type: none"> <li>Suicide awareness, prevention, and peer norm programs</li> <li>Naloxone education and distribution programs</li> <li>Prescription drug monitoring programs</li> </ul>	<ul style="list-style-type: none"> <li>Digital access to treatment services and crisis support</li> <li>Mental health education</li> </ul>
<b>Chronic Disease</b>	<ul style="list-style-type: none"> <li>Coronary heart disease</li> </ul>	<ul style="list-style-type: none"> <li>Hypertension screening and follow up</li> </ul>	

The Columbiana County CHIP also aligns with five of the National Prevention Priorities for the U.S. population: tobacco free living, preventing drug abuse, healthy eating, active living, and mental and emotional well-being. For more information on the national prevention priorities, please go to [surgeongeneral.gov](http://surgeongeneral.gov).

## Strategy Selection

Based on the chosen priorities, the Columbiana County Health Partners were asked to identify strategies for each priority area. Considering all previous assessments, including but not limited to the CHA, CTSA, quality of life survey and gap analysis, committee members determined strategies that best suited the needs of their community. Members referenced a list a of evidence-based strategies recommended by the Ohio SHIP, as well as brainstormed for other impactful strategies. Each resource inventory can be found with its corresponding priority area.

# SHIP Framework

Figure 1.2. SHIP framework

**Equity** Health equity is achieved when all people in a community have access to affordable, inclusive and quality infrastructure and services that, despite historical and contemporary injustices, allows them to reach their full health potential.

**Priorities** The SHIP identifies three priority factors and three priority health outcomes that affect the overall health and well-being of children, families and adults of all ages.

## What shapes our health and well-being?

Many factors, including these 3 SHIP priority factors\*:

- Community conditions**
  - Housing affordability and quality
  - Poverty
  - K-12 student success
  - Adverse childhood experiences
- Health behaviors**
  - Tobacco/nicotine use
  - Nutrition
  - Physical activity
- Access to care**
  - Health insurance coverage
  - Local access to healthcare providers
  - Unmet need for mental health care

## How will we know if health is improving in Ohio?

The SHIP is designed to track and improve these 3 SHIP priority health outcomes:

- Mental health and addiction**
  - Depression
  - Suicide
  - Youth drug use
  - Drug overdose deaths
- Chronic disease**
  - Heart disease
  - Diabetes
  - Childhood conditions (asthma, lead)
- Maternal and infant health**
  - Preterm births
  - Infant mortality
  - Maternal morbidity

**All Ohioans achieve their full health potential**

- Improved health status
- Reduced premature death

**Vision**  
Ohio is a model of health, well-being and economic vitality

**Strategies** The SHIP provides state and local partners with a menu of effective policies and programs to improve Ohio's performance on these priorities.

\* These factors are sometimes referred to as the social determinants of health or the social drivers of health

## Vision and Mission

A **Vision statement** defines a mental picture of what a community wants to achieve over time while the **mission statement** identifies why an organization/coalition exists and outlines what it does, who it does it for, and how it does what it does.

The Partners undertook a collaborative process to determine a shared mission and vision to guide the CHNA and CHIP assessment, prioritization, and community health improvement processes.

**2022-2025 Mission:** To create a healthy place for all to live, work, and play by preventing disease in the community through partnership, encouraging people to make better choices, and promoting overall health and wellness.

**2022-2025 CHNA Vision:** A safe community of healthy people.

## Columbiana County Community Health Partners

The CHIP was planned by a collaborative workgroup of various agencies, community members and service-providers within Columbiana County. From August 2022 to December 2022, the Columbiana County Health Partners reviewed many data sources concerning the health and social challenges that Columbiana County residents are facing. They determined priority issues which, if addressed, could improve future outcomes; determined gaps in current programming, policies, and community resources; examined best practices and evidence-based solutions; and determined specific strategies to address the identified priority issues. We would like to recognize these individuals and thank them for their dedication to this process:

Carol Cowan, BS, REHS (East Liverpool)  
East Liverpool City Health District

Debbie Pietrzak, MBA (Salem)  
Salem Regional Medical Center

Wesley J. Vins, DPA (Lisbon)  
Columbiana County Health District

Valerie Young, MSN, RN (East Liverpool)  
East Liverpool City Hospital

Lori Barnes, BS, REHS (Lisbon)  
Columbiana County Health District

Laura Fauss, MPH, REHS (Lisbon)  
Columbiana County Health District

Kayla Crawl, BS, REHS (East Liverpool)  
East Liverpool City Health District

Alanna Stainbrook, BSN, RN (Salem)  
Salem City Health District

Sara Houchins (Salem)  
Salem City Health District

Marian Dangerfield, MS (Lisbon)  
Columbiana County Educational Service Center

Steve Ullom, MBA, LSW (Lisbon)  
Family and Children First Council

Yvette Graham, MSW LISW-S (Lisbon)  
The Ohio State University Extension

Marcy Patton, M.S. Ed., LPCC/S, LICDC-CS (Lisbon)  
Columbiana County Mental Health & Recovery  
Services Board

Lori Colian, MSSA, LISW-S (Lisbon)  
Columbiana County Mental Health & Recovery  
Services Board

Melissa Galbreath, BSPH, COTAL (Lisbon)  
Columbiana County Educational Service Center

Audrey Dimmerling, MA (Lisbon)  
The Ohio State University Extension

Darlene Kinsey (East Liverpool)

## Community Health Improvement Plan Process

Beginning in August of 2022, the Columbiana County Health Partners met four (4) times and completed the following planning steps:

1. Initial Meeting-Organize Diverse Committee
  - Review the process and reference MAPP planning tool 1.1 used in CHNA and revised MAPP 2.0 principles used for CHIP and set timeline for completion.
  - Finalize committee members.
  - Review vision.
2. Quality of Life Survey-Open Discussion
  - Review results of the Quality-of-Life Survey with committee members.
3. Discuss Priorities-Reference CHNA
  - Discuss and Identify Strategic Issues and Needs.
  - Identify goals and compare community assessment.
  - Use quantitative and qualitative data to prioritize target impact areas.
4. Community Themes and Strengths Assessment- Open Ended Questions and Discussion
  - Encourage committee to compare past health conditions with current health trends.
5. Rank Priority Topics-Consider Community Conditions, Health Behaviors, Access to Care and Mental Health and Addiction.
  - Review SHIP quick guide.
  - Rate health problems based on magnitude, seriousness, and consequences to local population.
  - Arrange issues in priority order by considering how they relate to one another.
6. Finalize Priority Topics
  - Choose template and layout to include strategies, outcomes, priority population, action steps and timelines, measurable indicators, and identify lead agencies.
7. Gap Analysis-Evaluate Resources
  - Determine discrepancies between community needs and viable community resources to address local priorities.
  - Identify strengths, weaknesses, and evaluation strategies.
8. Formulate Strategies and Identify Outcomes
  - Review infrastructure process to guide long and short-term goals.
  - Determine evidence-based strategies to address community health disparities.
9. Best Practices-Finalizing of Processes and Information
  - Review of best practices, proven strategies, evidenced continuum, and feasibility continuum.
10. Resource Assessment-Determine existing programs, services, and activities in the community that address specific strategies.
11. Draft Plan
  - Review all steps taken.
  - Action step recommendations based on one or more of the following: enhancing existing efforts, implementing new programs or services, building infrastructure, implementing evidenced-based practices, and feasibility of implementation.

## MAPP Assessments: Community Health Status Assessment

The data assessment model followed best practices as outlined by the Association of Community Health Improvement and was also designed to ensure compliance with current Internal Revenue Service guidelines for charitable 501(c)(3) tax-exempt hospitals and National Public Health Department accreditation prerequisites.

**Primary Data:** Primary qualitative data to reflect input from the broad community and vulnerable populations was collected through 377 written community surveys completed by individuals representing diverse constituent groups. This data was then gathered and analyzed by HCNO and 34 stakeholder and focus group interviews reflecting input from 115 participants with this data gathered and analyzed by the Partners' workgroup.

**Community Survey:** As a first step of the community survey design process, health education researchers from the University of Toledo and staff members from HCNO chose to derive the majority of the community survey items from the Behavioral Risk factor Surveillance System (BRFSS), due to the ability to compare local data with state and national data. The project coordinator from HCNO met with the Partners' workgroup to review banks of potential survey questions from BRFSS survey and to define the content, scope, and sequence of the survey.

The sampling framework for the community survey consisted of adults ages 19 and over living in Columbiana County, with the target sample size of 382 adults needed to ensure a 95% confidence level, with a corresponding margin of error of 5%. Findings from the community survey responses are reflected within each respective topic area of the CHNA in Key Issues or Concern pages 16-18.

**Focus Groups and Stakeholder Interviews:** Community leaders and key stakeholders were identified by the Partners as experts in a particular field related to their background experience or professional position; and/or those who understand the needs of a particular community/geographic region or under-represented group, including the medically underserved and vulnerable populations defined in the CHNA.

The Association for Community Health Improvement's Toolkit was used as a best-practice guide for developing community-based participatory research through a collaborative approach to reflect the experiences and opinions of community stakeholders. For comparative purposes, a standardized interview question guide was then developed from the 2019 interview guide, and then used by the workgroup to conduct the interviews and facilitate focus group interviews with 106 participants from December 2021- January 2022.

Community participants represented in the focus group and stakeholder interviews included:

- School Districts and Youth Services
- Local Government Officials/County Commissioners
- Juvenile Justice System
- Health and Human Service Providers
- Community Resource Centers
- Mental Health and Recovery Service Providers
- Food Pantries
- Faith-Based Organizations Providing Assistance
- Senior Services & Home Health Providers
- Veteran's Service Commission
- Hospital Case Managers
- Hispanic Community Members & Service Providers

An analysis was conducted on the notes and transcripts of stakeholder interviews and community focus groups to identify and quantify themes that consistently emerged. Findings from this source of primary data were obtained regarding factors impacting social determinants of health, top health care issues and priorities, community strengths and resources, opportunities to increase access to health care resources, and how to improve community supports. Findings from the focus groups and stakeholder interviews are reflected within each respective topic area of the CHNA, in the Key Issue section pages 16-18.

**Data Gaps/Limitations:** As with any assessment, it is important to consider the findings in light of possible limitations. This CHNA relies on multiple data sources and community input gathered between the summer of 2021 and April 2022. A number of data limitations should be recognized when interpreting results, such as some data only exists at a county-wide or state level, which does not allow for assessing needs at a more granular level. In addition, secondary data measures community health in prior years and may not reflect current conditions. The impacts of recent public policy developments, changes in the economy and/or other community developments are not reflected in those data sets.

The sampling frame for the adult community survey consisted of adults ages 19 and over living in Columbiana County, and the investigators conducted a power analysis to determine what sample size was needed to ensure a 95% confidence level, with a corresponding margin of error of 5%. Every attempt was made to obtain a 95% confidence level for the Salem and East Liverpool subsets. It should be noted that if any important differences existed between the respondents and non-respondents regarding the questions asked, this would represent a threat to the external validity of the results (the generalizability of the results to the entire County's adult population). Lastly, caution should be used when interpreting sub-group results, as the margin of error for any sub-group is higher than that of the overall survey sample. In addition, there is very limited data regarding the Amish and undocumented Hispanics, which is a gap that shows these groups are under-represented in the findings.

Additional gaps analyzed and/or identified for each priority health factor or outcome are specified within each selected strategy.

**Findings from Other Needs Assessments:** Findings from other health needs assessments that were conducted in the region and in the state of Ohio were also reviewed by the Partners to help inform the development of this CHNA, including:

- The 2019-2022 CHNA conducted by the Columbiana County Health Partners' workgroup.
- The 2019 Akron Children's Hospital CHNA and 2019 Mercy Health- Youngstown CHNA (conducted by Kent State University); and the 2019 Aultman Hospital CHNA conducted by the Center for Marketing & Opinion Research. (See examples of data findings below)

When compared to other regional assessments, the overall wellbeing for Columbiana County residents has declined, and unhealthy behaviors and outcomes have increased. Trends in obesity, physical inactivity and mental health have increased; and overall health status indicates that the health of County residents has worsened. However, multi-sector collaboration to improve health has continued to remain strong within the County, as evidenced by the collaborative response to the COVID-19 pandemic and repurposing of scarce community resources. (See example below).

### **Findings from the Ohio 2019 State Health Assessment and 2020-2022 Health Improvement Plan**

The interconnectedness of Ohio's greatest health challenges, along with the overall consistency of health priorities identified in this assessment, indicate many opportunities for collaboration between a wide variety of partners at and between the state and local levels, including physical and behavioral health organizations and sectors beyond health. To view the 2019 Ohio State Health Assessment, please visit: [2019 Online State Health Assessment | Ohio Department of Health](#)

**Ohio's Universal Health Issues:** According to the 2019 Ohio SHA, the following issues emerged in all regions of Ohio, including urban, suburban, Appalachian, and non-Appalachian rural counties:

- Obesity
- Mental health
- Access to health care/medical care
- Drug and alcohol abuse



## Gap Analysis

A **gap** is an area where the community needs to expand its efforts to reduce a risk, enhance an effort, or address another target for change. A **strategy** is an action the community will take to fill the gap.

**Evidence** is information that supports the linkages between a strategy, outcome, and targeted impact area. The Columbiana County Health Partners were asked to determine gaps in relation to each priority area, consider potential or existing resources, and brainstorm potential evidence-based strategies that could address those gaps.

## Evidence-Based Practices

As part of the gap analysis and strategy selection, the Columbiana County Health Partners considered a wide range of evidence-based practices, including best practices. An **evidence-based practice** has compelling evidence of effectiveness. Participant success can be attributed to the program itself and have evidence that the approach will work for others in a different environment. A **best practice** is a program that has been implemented and evaluation has been conducted. While the data supporting the program is promising, its scientific rigor is insufficient. Each evidence-based practice can be found with its corresponding strategy.

The Partners identified existing health care facilities and resources within the primary service area of Columbiana County and the region, which are available to respond to the significant health needs of the community. Resources included: assistance programs, assisted living, children's services, counseling and mental health services, drug and alcohol services, emergency assistance, food banks/pantries, free/low-cost clinics, home care, hospice, housing assistance, medical and dental care services, nutrition, recreation, senior services, shelters, support groups, transportation, and women's health. This information was compiled from resource directories currently utilized by area case managers, social service organizations and the respective Partners' organizations; and includes a listing of community and hospital-based services. (The full Asset Resource Inventory is in Appendix II.)

In addition, specific resources were identified for each health priority and expected health outcome factor.

### Columbiana County Health Improvement Plan Templates

The following templates have been prepared and will identify all phases of the 2023-2025 Columbiana County Health Improvement Plan (CHIP) along with the breakdown of actions to be taken annually by partners to achieve measurable results, while pinpointing hurdles or gaps that may anticipated or currently exist to prohibit health equity for all residents.

**Community Conditions**

**Priority #1. K-12 Student Success: Chronic Absenteeism**

**Strategy: Attendance interventions for chronically absent students**

**Outcome: Improve Student Attendance**

**Priority Population: K-12 Students**

Action Steps & Timeline	Indicator(s) to Measure Impact:	Lead Agency
<p><b>Year 1 (End 1/1/24):</b></p> <p><b>Interventions to improve student attendance:</b></p> <p><b>Collaborate with schools and court-based programs to help enhance existing programs.</b></p> <p><b>Mentor and assist schools to coordinate new initiatives to students for increasing attendance.</b></p> <p><b>Work through programs of CASH Coalition.</b></p>	<p>1. Chronic Absenteeism rates for 2021-2022:</p> <p>Baseline %: Columbiana County-wide 33.79%</p> <p>East Liverpool-46.50%</p> <p>Salem- 37.30%</p> <p>Source: Ohio Department of Education (ODE)</p>	<p>Columbiana County Health Partners</p> <p>CASH Coalition</p> <p>Columbiana County Educational Service Center</p>
<p><b>Year 2 (End 1/1/25): Continue efforts of 1 year.</b></p> <p><b>Continue to work with schools and enhance programs.</b></p>		
<p><b>Year 3 (End 1/1/26): Continue efforts of year 1 and year 2.</b></p> <p><b>Continue to work with schools and enhance programs.</b></p>		

**Strategy identified as likely to decrease disparities:**  Yes  No  Not SHIP Identified

**Gaps:** Lack of Parental Support-Limited Family Engagement.

Workforce Shortages -Lack of qualified staff within schools to meet demands and the need for referral to access counseling and treatment.

A limited capacity and system structure to address referrals.

Physicians providing excessive/unwarranted excuses for absenteeism leading to lack of accountability for students and parents.

**Resources to address strategy:** Free and Reduced Breakfast and Lunch Programs in the schools, ODE.

Data from the Search Institute's; Attitudes and Behaviors Survey, administered to students in 7<sup>th</sup>, 9<sup>th</sup>, and 10<sup>th</sup> grade throughout Columbiana County every two years (Reference page 21 of the CHNA).

Life Skills Training Programs available and provided to students in school districts.

Asthma Management and Diabetes Management Program.

**Community Conditions**

**Priority #2. Adverse Childhood Experiences**  (ACE's) Children 0-17 Experiencing two or more Adverse Experiences

**Strategy: Supports for system-involved children & youth, including multisystemic therapy (MST) for juvenile offenders**

**Outcome: Reduced recidivism and reduced incarceration**

**Priority Population: Youth 12-17**

Action Steps & Timeline	Indicator(s) to Measure Impact:	Lead Agency
<p><b>Year 1 (End 1/1/24):</b> Collaborate with local courts and children's services in the county.  Increase the appropriate referral awareness to provide interventions.  Work with existing programs and agencies to increase capacity to accept referrals to provide interventions.  Assist or promote education of the criteria to make appropriate referrals.</p>	<p>1. Number of screened-in reports of child abuse and/or neglect. (Baseline: 2,201 child abuse calls, 519 investigated. 2021 Columbiana County Dept of Job and Family Services)</p>	<p>Columbiana County Mental Health and Recovery Service Board  East Liverpool City Health District- Liaison with the courts for housing</p>
<p><b>Year 2 (End 1/1/25):</b> Continue efforts of year 1</p>		<p>Columbiana County Educational Center</p>
<p><b>Year 3 (End 1/1/26):</b> Continue efforts of year 1 and 2</p>		

**Strategy identified as likely to decrease disparities:**  Yes  No  Not SHIP Identified

**Gaps:**

- Lack of counseling available to grades K-12 students.
- Age disparity- Currently only students aged 12-17 can be referred to treatment programs.
- Lack of services to detect early child abuse and neglect.
- Lack of parent mentorship and school-based prevention.
- Lack of capacity to make referrals due to work force available to deal with cases.

**Resources to address strategy:**

- East Liverpool City Health District Housing Division      Columbiana County Educational Service Center
- Columbiana County Community Action Agency      Bridges out of Poverty
- Columbiana County Job and Family Services

**Health Behaviors**

**Nutrition**

**Priority #3. Youth Fruit and Vegetable Consumption**

**Strategy:** Healthy meals served at schools, including school-based nutrition education programs & increase nutrition education and access to healthy eating choices for adults and youth

**Outcome: Improved dietary habits, increased fruit & vegetable consumption, reduced sweetened beverage consumption, improved weight status**

**Priority Population: Youth grades K-12, and vulnerable populations**

Action Steps & Timeline	Indicator(s) to Measure Impact:	Lead Agency
<p><b>Year 1 (End 1/1/24):</b></p> <p>School based nutritional and educational programs-All schools offer yellow sticker and free and reduced breakfast programs.</p> <p>Food bank participation to address food insecurity.</p> <p>Data from WIC programs to address food insecurity.</p> <p>Continue to provide programs to monitor and help enhance food and nutrition education in the schools including the voucher programs to increase youth fruit and vegetable consumption.</p>	<p>1. Obesity: Percent of adults that report BMI <math>\geq</math> 30 (BRFSS Baseline: 36%. 2022 CHNA)</p> <p>2. Columbiana County 3<sup>rd</sup> grade students classified as obese or overweight (baseline: 35.8%, 2016 Akron Children's Hospital Mahoning Valley CHNA)</p>	<p>Columbiana County Ohio State Extension Service</p>
<p><b>Year 2 (End 1/1/25):</b></p> <p>Continue to influence programs to monitor and help enhance food and nutrition education in the schools including the voucher programs to increase youth fruit and vegetable consumption.</p> <p>Create a list of county food pantries that provide healthy eating choices to share with the community.</p>	<p>3. % of high school students who did not eat fruit or drink 100% fruit juices during past 7 days (baseline: 8% of high school students 2019, OSU Extension)</p>	
<p><b>Year 3 (End 1/1/26):</b></p> <p>Continue efforts of year 1 and 2</p>	<p>4. % of high school students who did not eat vegetables (excluding French fries, fried potatoes, or potato chips) during past 7 days. (Baseline: 9% of high school students 2019, OSU Extension)</p>	

**Strategy identified as likely to decrease disparities:**  Yes  No  Not SHIP Identified

**Gaps:** Limited access to classrooms education on healthy fruit and vegetable choices.

**Resources to address strategy: Local Food Banks**

**Align with the WIC programs to identify programs available.**

**Grants and funding dedicated to Columbiana County Expanded Food and Nutrition Education Program.**

**Mental Health and Addiction**

**Priority #4. Youth Suicide Deaths**

**Strategy: Suicide awareness, prevention, and peer norm programs**

**Outcome: Reduced suicide, increased knowledge of suicide, improved coping skills**

**Priority Population: Youth ages 8-17 and vulnerable populations**

Action Steps & Timeline	Indicator(s) to Measure Impact:	Lead Agency
<p><b>Year 1 (End 1/1/24):</b></p> <p>Assist in the implementation of universal school-based suicide awareness education to school administration and students within Columbiana County.</p> <p>Provide training for staff and youth for suicide awareness. Example Mental Health First Aid, CPR.</p> <p>Collaborate and promote suicide prevention programs and influence and assist in establishing universal school-based programs through-out the community.</p> <p>Screen hospital patients for suicide risk by using the Columbia Suicide Severity Rating Scale (CSSRS)</p>	<p>1. Youth suicide deaths -1 (2021): Columbiana County</p> <p>2. Adult suicide deaths-21 (2021): Columbiana County</p> <p>Source: Columbiana County Coroner's Office</p>	<p>Columbiana County Mental Health and Recovery Service Board</p> <p>East Liverpool City Hospital</p> <p>Salem Regional Medical Center</p> <p>East Liverpool City Health District</p>
<p><b>Year 2 (End 1/1/25): Continue efforts year 1.</b></p>		<p>Salem City Health District</p> <p>Columbiana County Health District</p>
<p><b>Year 3 (End 1/1/26):</b> Continue efforts year 1 and 2 and to expand program service area where necessary.</p>		

**Strategy identified as likely to decrease disparities:**  Yes  No  Not SHIP Identified

**Gaps:** Cost to utilize evidence-based programs.

Time constraints for assistance within school scheduling.

Availability of services constraints due to workforce.

**Resources to address strategy:**

Coroner's Reports

Development Asset Survey

Mental Health Recovery Services Board Community Needs Assessment

Columbia Suicide Severity Rating Scale

**Mental Health and Addiction**

**Priority #5. Adult Suicide Deaths**

**Strategy: Digital access to treatment services and crisis reports, including crisis lines**

**Outcomes: Improved mental health, reduced suicide**

**Priority Population: Adults and vulnerable populations**

Action Steps & Timeline	Indicator(s) to Measure Impact:	Lead Agency
<p><b>Year 1 (End 1/1/24):</b></p> <p>Promote Mental Health First Aid Education.</p> <p>Educate and promote awareness of the Mental Health First*211 Tip Line and 988 Suicide and WARM Lines.</p> <p>Bring awareness of available services through digital access.</p>	<p>1. Youth suicide deaths 1 (2021): Columbiana County</p> <p>2. Adult suicide deaths-21 (2021): Columbiana County</p> <p>Source: Columbiana County Coroner's Office</p>	<p>Columbiana County Mental Health and Recovery Service Board</p>
<p><b>Year 2 (End 1/1/25): Continue efforts year 1.</b></p>		
<p><b>Year 3 (End 1/1/26):</b> Continue efforts year 1 and 2.</p>		

**Strategy identified as likely to decrease disparities:**  Yes  No  Not SHIP Identified

**Gaps:**

- Cost to utilize evidence-based programs.
- Time constraints for assistance within school scheduling.
- Availability of services constraints due to workforce.

**Resources to address strategy:**

- Coroner's Reports
- Development Asset Survey
- Mental Health Recovery Services Board Community Needs Assessment

**Mental Health and Addiction**

**Priority #6. Unintentional Drug Overdose Deaths**

**Strategy: Naloxone education and distribution programs**

**Outcomes:** Increased knowledge of appropriate drug overdose response, reduced overdose deaths, increased self-confidence

**Priority Population: Adults 18 Years and over and vulnerable populations**

Action Steps & Timeline	Indicator(s) to Measure Impact:	Lead Agency
<p><b>Year 1 (End 1/1/24):</b></p> <p>Collaborate with community-based organizations to educate and identify the distribution outlets of Naloxone to prevent overdose deaths.</p> <p>Local Health Department to help encourage first responders and employers to keep Naloxone on hand for employee emergencies.</p> <p>Increase organization awareness of any agency that has access and can distribute Naloxone through Project Dawn.</p>	<p># Percentage of deaths due to unintentional drug overdose</p> <p>Columbiana County Drug deaths 42 (2021)</p> <p>Source: Columbiana County Coroner's office</p> <p>Total number of Naloxone kits distributed -2442 (2022)</p> <p>Source: Project Dawn</p>	<p>Columbiana County Mental Health and Recovery Service Board</p> <p>East Liverpool City Health District</p> <p>Salem City Health District</p>
<p><b>Year 2 (End 1/1/25): Continue efforts year 1.</b></p>		<p>Columbiana County Health District</p>
<p><b>Year 3 (End 1/1/26): Continue efforts year 1 and 2.</b></p>		

**Strategy identified as likely to decrease disparities:**  Yes  No  Not SHIP Identified

**Gaps:**

- Lack of awareness of available intervention services. The stigma that is associated with those having drug addiction and treatment programs.
- Lack of digital awareness to treatment options.
- Lack of participation and willingness to distribute Naloxone within communities.

**Resources to address strategy:**

- Project Dawn
- Columbiana County Mental Health Board
- Agencies distributing naloxone

**Health Behaviors**

**Priority #7. Chronic Disease**

**Strategy: Hypertension screening and follow-up, including blood pressure screening for adults over 18, including obtaining measurements outside of the clinical setting**

**Outcomes:** Increase the number of hypertension screenings being offered

**Priority Population: Adults and vulnerable populations**

Action Steps & Timeline	Indicator(s) to Measure Impact:	Lead Agency
<p><b>Year 1 (End 1/1/24):</b></p> <p>Promote education of hypertension through health department services offered.</p> <p>Conduct blood pressure screenings in the community.</p> <p>Partner with East Liverpool City Hospital to increase clinical screenings to residents.</p> <p>Promote education of learning signs of Hypertension.</p> <p>Encourage and increase the percentage treatment options to those identified.</p> <p>SHIP: Electronic health record utilization to identify undiagnosed hypertension Systematic referrals of adults with hypertension to community programs Engagement of non-physician team members (nurses, pharmacists, social workers, etc.) in screening and referral.</p>	<p>Premature death: Years of potential life lost before age *75 per 100,000 population.</p> <p>*Premature Death refers to years of potential life lost(YPLL) before age 75, reflecting the burden of deaths that potentially could have been prevented. When calculating YPLL, every death occurring before age 75 contributes to the total of years of life lost. (Example):A person dying at age 25 contributes to 50 years of life lost, whereas a person who dies at age 65 contributes to 10 years of life lost.</p>	<p>East Liverpool City Health District</p> <p>Salem City Health District</p> <p>Columbiana County Health District</p> <p>East Liverpool City Hospital</p> <p>Salem Regional Medical Center</p> <p>Columbiana County Health Partners</p>
<p><b>Year 2 (End 1/1/25):</b></p> <p>Continue efforts year 1</p>		
<p><b>Year 3 (End 1/1/26):</b></p> <p>Continue efforts year 1 and 2</p>		

**Strategy identified as likely to decrease disparities:**  Yes  No  Not SHIP Identified

**Gaps:** Lack of community engagement

Lack of community participation


Lack of transportation sources

**Resources to address strategy:** Data from County Coroner Report of premature death statistics



## Progress and Measuring Outcomes

Progress will be monitored at regular intervals with a review of the measurable indicators identified for each strategy by the Columbiana County Health Partners. Most indicators align directly with the SHIP. The individuals or agencies that are working on strategies will meet on an as-needed basis. The full workgroup will initially meet semi-annually; and depending on progress, may then meet twice yearly to report-out progress. The committee will create a plan to disseminate the CHIP to the community. Strategies, responsible agencies, and timelines will be reviewed at the end of each year by the workgroup. As this CHIP is a living document, edits and revisions will be made accordingly.

The Columbiana County Health Partners will continue facilitating a CHA every three years to collect data for determining community needs and trends. Primary data will be collected for adults using national sets of questions to not only compare trends in Columbiana County, but also be able to compare to the state and nation. This data will serve as measurable outcomes for each priority area. Indicators have already been defined throughout this report and are identified with the  icon.

In addition to outcome evaluation, process evaluation will also be used on a continuous basis to focus on the success of the strategies. Areas of process evaluation that the CHIP workgroup will monitor include the following: number of participants, location(s) where services are provided, number of policies implemented, economic status and racial/ethnic background of those receiving services (when applicable), and intervention delivery (quantity and fidelity).

Furthermore, all strategies have been incorporated into a "Progress Report" template that can be completed at all future Columbiana County Health Partners' meetings, keeping the workgroup on task and accountable. This progress report may also serve as meeting minutes.

### Contact Us

For more information about any of the agencies, programs, and services described in this report, please contact:

**Carol Cowan, BS, REHS**

East Liverpool City Health District

126 West 6<sup>th</sup> Street

East Liverpool, Ohio 43920

Phone: 330-386-7400

Email: [health@eastliverpool.com](mailto:health@eastliverpool.com)

## Appendix I: Links to Websites

Title of Link	Website URL
Bridges Out of Poverty	<a href="https://www.ahaprocess.com">https://www.ahaprocess.com</a>
Culture, language, and health literacy	<a href="http://www.hrsa.gov/cultural-competence/index.html">www.hrsa.gov/cultural-competence/index.html</a>
Early childhood learning	<a href="http://education.ohio.gov/Topics/Early-Learning">http://education.ohio.gov/Topics/Early-Learning</a>
Food insecurity assessment tool and resource list	<a href="http://www.ihs.gov/MedicalPrograms/Diabetes/HomeDocs/Resources/InstantDownloads/FoodInsecurityAssessTool.pdf">www.ihs.gov/MedicalPrograms/Diabetes/HomeDocs/Resources/InstantDownloads/FoodInsecurityAssessTool.pdf</a>
Health communications in tobacco prevention and control	<a href="http://www.cdc.gov/tobacco/stateandcommunity/bp-health-communications/pdfs/health-communications-508.pdf">www.cdc.gov/tobacco/stateandcommunity/bp-health-communications/pdfs/health-communications-508.pdf</a>
Healthy food initiatives at food banks	<a href="http://www.countyhealthrankings.org/take-action-to-improve-health/what-works-for-health/policies/healthy-food-initiatives-in-food-banks">www.countyhealthrankings.org/take-action-to-improve-health/what-works-for-health/policies/healthy-food-initiatives-in-food-banks</a>
Help Me Grow	<a href="https://odh.ohio.gov/wps/portal/gov/odh/know-our-programs/help-me-grow/help-me-grow">https://odh.ohio.gov/wps/portal/gov/odh/know-our-programs/help-me-grow/help-me-grow</a>
Hidden in Plain Sight	<a href="http://powertotheparent.org/be-aware/hidden-in-plain-sight/">http://powertotheparent.org/be-aware/hidden-in-plain-sight/</a>
Home Improvement Loans and Grants	<a href="http://www.cdc.gov/policy/hst/hi5/homeimprovement/index.html">www.cdc.gov/policy/hst/hi5/homeimprovement/index.html</a>
NAMI Be Present Campaign	<a href="http://www.curestigma.org/">www.curestigma.org/</a>
National Suicide Prevention Lifeline	<a href="https://suicidepreventionlifeline.org">https://suicidepreventionlifeline.org</a>
OARRS	<a href="http://www.ohiopmp.gov/">www.ohiopmp.gov/</a>
PAX Good Behavior Game	<a href="http://www.goodbehaviorgame.org/">www.goodbehaviorgame.org/</a>
PHQ-9	<a href="http://www.integration.samhsa.gov/images/res/PHQ%20-%20Questions.pdf">www.integration.samhsa.gov/images/res/PHQ%20-%20Questions.pdf</a>
Prevent Diabetes STAT	<a href="https://preventdiabetesstat.org/index.html">https://preventdiabetesstat.org/index.html</a>
QPR	<a href="https://qprinstitute.com/">https://qprinstitute.com/</a>
Red Flags	<a href="http://www.redflags.org/">/www.redflags.org/</a>
Resilience Film	<a href="https://kpfjfilms.co/resilience/about-the-film/">https://kpfjfilms.co/resilience/about-the-film/</a>
Serving Up MyPlate: A Yummy Curriculum	<a href="http://www.fns.usda.gov/tn/serving-myplate-yummy-curriculum">www.fns.usda.gov/tn/serving-myplate-yummy-curriculum</a>
SOS	<a href="http://mindwise.wpengine.com/what-we-offer/suicide-prevention-programs/">http://mindwise.wpengine.com/what-we-offer/suicide-prevention-programs/</a>
Tobacco Control Interventions	<a href="http://www.cdc.gov/policy/hst/hi5/tobaccointerventions/index.html">www.cdc.gov/policy/hst/hi5/tobaccointerventions/index.html</a>
Type 2 Diabetes Risk Test	<a href="http://www.diabetes.org/are-you-at-risk/diabetes-risk-test/">www.diabetes.org/are-you-at-risk/diabetes-risk-test/</a>
Zero Suicide	<a href="https://zerosuicide.sprc.org">https://zerosuicide.sprc.org</a>

## Appendix II: Resource Inventory

Agency	Address	City	State	Zip	Phone Number
<b>Assistance Programs</b>					
A.I.D., Inc. (Action, Information, Direction)		Salem	OH	44460	330-332-1373
Catholic Charities Regional Agency Emergency Assistance	319 West Rayen Avenue	Youngstown	OH	44502	330-744-3320 800-670-6089
Columbiana County Department of Job & Family Services	7989 Dickey Drive Suite 2	Lisbon	OH	44432	330-424-1471
Columbiana County Veteran's Service Commission	7989 Dickey Drive Suite 1	Lisbon	OH	44432	330-424-7214
Columbiana Meals on Wheels	865 East Park	Columbiana	OH	44408	330-482-0366
Community Action Agency of Columbiana County	7880 Lincole Place	Lisbon	OH	44432	330-424-7221
Family & Community Services, Inc.	705 Oakwood Street Suite 221	Ravenna	OH	44266	330-297-7027
Mahoning-Youngstown Community Action Partnership (MYCAP)	1325 5th Avenue	Youngstown	OH	44504	330-747-7921
Making Kids Count	7178 West Boulevard Suite E	Youngstown	OH	44512	330-758-3434
United Way Services of Northern Columbiana County FamilyWize-Discount Drug Program	713 East State Street	Salem	OH	44460	330-337-0310
WIC (Women, Infants, Children) Columbiana County	7876 Lincole Place	Lisbon	OH	44432	330-424-7293
<b>Assisted Living</b>					
Copeland Oaks	800 South 15th Street	Sebring	OH	44672	330-938-1093
Crossroads at Beaver Creek	13280 Echo Dell Road	East Liverpool	OH	43920	330-385-2211
Grace Woods Senior Living, LLC	730 Youngstown Warren Road	Niles	OH	44446	330-652-4177
Grace Woods Senior Living of Salem, LLC	1166 Benton Road	Salem	OH	44460	330-332-1104
Senior Center of Mahoning County	1110 5th Avenue	Sebring	OH	44672	330-744-5071
Whispering Pines Village	937 East Park Avenue	Columbiana	OH	44408	844-305-8813
<b>Children's Services</b>					
Akron Children's Hospital Beeghly Campus	6505 Market Street	Boardman	OH	44512	330-746-8100
Akron Children's Hospital Pediatrics Lisbon	330 North Market Street	Lisbon	OH	44432	330-424-9866
Alta Behavioral Healthcare Early Childhood Mental Health	711 Belmont Avenue	Youngstown	OH	44502	330-793-2487
Alta Head Start	142 Javit Court	Austintown	OH	44515	330-736-0071

Agency	Address	City	State	Zip	Phone Number
Boy Scouts of America Buckeye Council	2301 13th Street NW	Canton	OH	44708	330-580-4272 800-589-9812
Camp Fire Tayanoka		East Liverpool	OH	43920	330-385-0645
Columbiana County Department of Job & Family Services	7989 Dickey Drive Suite 2	Lisbon	OH	44432	330-424-1471
Columbiana County Educational Service Center	38720 Saltwell Road	Liston	OH	44432	330-424-9591
Columbiana County Help Me Grow- Columbiana County Board of Developmental Disabilities	34947 State Route 172	Lisbon	OH	44432	330-424-0288
Columbiana County Juvenile Court Charles A. Pike Center	260 West Lincoln Way	Lisbon	OH	44432	330-424-4071
Community Action Agency of Columbiana County	7880 Lincole Place	Lisbon	OH	44432	330-424-7221
Community Action Agency of Columbiana County Community Health Center-East Liverpool	16687 Saint Clair Avenue Suite 203	East Liverpool	OH	43920	330-386-7777
Community Action Agency of Columbiana County Community Health Center-Lisbon	7880 Lincole Place	Lisbon	OH	44432	330-424-5686
Community Action Agency of Columbiana County Salineville Community Health Center at Melhorn	103 West Main Street	Salineville	OH	43945	330-679-2640
Community Resource Center	940 Pennsylvania Avenue	East Liverpool	OH	43920	330-385-1301
Counseling Center of Columbiana County	40722 State Route 154	Lisbon	OH	44432	330-424-9573
Counseling Center of Columbiana County East Liverpool Branch Office	15613 Pineview Drive Suite A	East Liverpool	OH	43920	330-386-9004
Counseling Center of Columbiana County Salem Branch Office	166 Vine Ave	Salem	OH	44460	330-332-1514
Easter Seals of Mahoning, Trumbull, and Columbiana	299 Edwards Street	Youngstown	OH	44502	330-743-1168
Family & Children First of Columbiana County	38720 Saltwell Rd	Lisbon	OH	44432	330-424-9591
Girl Scouts of North East Ohio Youngstown	8580 South Avenue	Youngstown	OH	44514	330-652-5876 800-852-4474
Louis Tobin Attention Center	8363 County Home Road	Lisbon	OH	44432	330-424-9809
Making Kids Count	7178 West Boulevard Suite E	Youngstown	OH	44512	330-758-3434
Salem City Health District	230 North Lincoln Avenue #104	Salem	OH	44460	330-332-1618
Salem Comprehensive Pediatric Health Center	1076 East State Street	Salem	OH	44460	330-332-2710
Second Harvest Food Bank of Mahoning Valley BackPack food program		Youngstown	OH	44509	330-792-5522

Agency	Address	City	State	Zip	Phone Number
United Way Services of Northern Columbiana County	713 East State Street	Salem	OH	44460	330-337-0310
United Way Services of Northern Columbiana County FamilyWize-Discount Drug Program	713 East State Street	Salem	OH	44460	330-337-0310
<b>Counseling and Mental Health Services</b>					
Alta Behavioral Healthcare	711 Belmont Avenue	Youngstown	OH	44502	330-793-2487
Belmont Pines Hospital Children's Behavioral Health Hospital and Residential Treatment Center	615 Churchill-Hubbard Road	Youngstown	OH	44505	330-759-2700 800-423-5666
Community Action Agency Health & Behavioral Health Center at Lisbon	7880 Lincole Place	Lisbon	OH	44432	330-424-5686
Community Action Agency East Liverpool Campus Building #1	16480 St. Clair Ave.	East Liverpool	OH	43920	330-386-7777
Community Action Agency East Liverpool Campus Building #2	16494 St. Clair Ave	East Liverpool	OH	43920	330-386-7870
Catholic Charities Regional Agency	319 West Rayen Avenue	Youngstown	OH	44502	330-744-3320 800-670-6089
Catholic Charities Regional Agency Christina Center	115 East Washington Street	East Liverpool	OH	44432	330-420-0845
Catholic Charities Regional Agency Christina House (undisclosed domestic violence shelter)					24 hr. Crisis Line: 330-420-0037
Cleveland Clinic Akron General Acute Care In-Patient Psychiatric Treatment	1 Akron General Avenue	Akron	OH	44307	330-344-6000
Columbiana County Mental Health and Recovery Services Board	27 Vista Drive	Lisbon	OH	44432	330-424-0195
Comprehensive Behavioral Health Association, Inc.- Austintown	104 Javit Ct.	Austintown	OH	44515	330-797-4050 866-900-5590
Comprehensive Behavioral Health Association, Inc.- East Liverpool	321 W. 5 <sup>TH</sup> St.	E. Liverpool	OH	43920	330-385-8800 866-899-8318
Counseling Center of Columbiana County	40722 State Route 154	Lisbon	OH	44432	330-424-9573
Counseling Center of Columbiana County East Liverpool Branch Office	15613 Pineview Drive Suite A	East Liverpool	OH	43920	330-386-9004
Counseling Center of Columbiana County Salem Branch Office	188 North Lincoln Avenue	Salem	OH	44460	330-332-1514
East Liverpool City Hospital Behavioral Health Inpatient Center	425 West 5th Street	East Liverpool	OH	43920	330-386-3590
Family Recovery Center Administrative, Counseling & Criminal Justice Office	964 North Market Street	Lisbon	OH	44432	330-424-1468
Family Recovery Center Fleming House	1300 Rose Drive	Lisbon	OH	44432	330-420-3760

Agency	Address	City	State	Zip	Phone Number
Family Recovery Center Oxford House	320 Benton Road	Salem	OH	44460	330-337-7501
Family Recovery Center Prevention Office	966 North Market Street Lower Level	Lisbon	OH	44432	330-424-0531
Family Recovery Center Renaissance House	855 Newgarden Road	Salem	OH	44460	234-567-4746
HelpNetworkNEO		Youngstown	OH	44501	330-424-7767 800-427-3606
Insight Counseling & Wellness- Canfield	3685 Stutz Dr, Ste 103	Canfield	OH	44406	330-286-3558
Insight Counseling & Wellness- East Liverpool	45875 Bell School Rd, Ste B	E. Liverpool	OH	43920	234-254-5656
Insight Counseling & Wellness- East Palestine	678 E. Taggart St, Ste 105	E. Palestine	OH	44413	330-932-2095
Insight Counseling & Wellness- Salem	2400 Southeast Blvd. Ste B	Salem	OH	44460	234-567-4660
Insight Counseling & Wellness- Wintersville	115 Main St.	Wintersville	OH	43953	740-996-3376
Louis Stokes Cleveland VA Medical Center East Liverpool/Calcutta Multi-Specialty Outpatient Clinic	5655 State Route 170 Suite A	Calcutta	OH	43920	330-386-4303
Neil Kennedy Recovery Clinic	2151 Rush Boulevard	Youngstown	OH	44507	330-744-1181 800-228-8287
New Day Counseling & Psychiatric Services	Beldon Village Glass Tower- 4450 Beldon Village St NW, Ste 606	Canton	OH	44718	330-305-9696
On Demand Counseling- Austintown	5760 Patriot Dr.	Austintown	OH	44515	330-270-8610
On Demand Counseling- East Liverpool	658 Walnut St., Ste 3	E. Liverpool	OH	43920	330-932-0157
Behavioral Medicine and Wellness Center Intensive Outpatient Mental Health Services	Salem Regional Medical Center 2020 East State Street Suite J	Salem	OH	44460	330-337-4935
St. Elizabeth Youngstown Hospital Acute Care In-Patient Psychiatric Treatment	1044 Belmont Avenue	Youngstown	OH	44501	Main Number: 330-746-7211
Dr. Katherine Stutzman, Ph.D.	425 West Fifth Street	East Liverpool	OH	43920	330-386-2047
Summa St. Thomas Hospital Behavioral Health Services Acute Care In-Patient Psychiatric Treatment	444 North Main Street	Akron	OH	44310	330-379-9841
<b>Drug and Alcohol Services</b>					
Broadway Recovery Services	725 Boardman Canfield Rd, Ste C4	Youngstown	OH	44512	855-292-9778
Broadway Recovery House	1184 Third St.	Salem	OH	44460	

Agency	Address	City	State	Zip	Phone Number
Community Action Agency East Liverpool Campus Building #1	16480 St. Clair Ave.	East Liverpool	OH	44432	330-386-7777
Counseling Center of Columbiana County	40722 State Route 154	Lisbon	OH	44432	330-424-9573
Counseling Center of Columbiana County East Liverpool Branch Office	15613 Pineview Drive Suite A	East Liverpool	OH	43920	330-386-9004
Counseling Center of Columbiana County Salem Branch Office	188 North Lincoln Avenue	Salem	OH	44460	330-332-1514
Coleman Crisis Services	2421 13th Street NW	Canton	OH	44708	330-452-9812 800-956-6630
East Liverpool City Hospital Drug & Alcohol Medical Stabilization New Vision	425 West 5th Street	East Liverpool	OH	43920	330-386-3193 800-939-2273
Family Care Ministries	119 W. 6 <sup>th</sup> Street	East Liverpool	OH	43920	330-368-0725
Family Recovery Center Administrative, Counseling & Criminal Justice Office	964 North Market Street	Lisbon	OH	44432	330-424-1468
Family Recovery Center Fleming House	7300 Rose Drive	Lisbon	OH	44432	330-420-3760
Family Recovery Center Oxford House	320 Benton Road	Salem	OH	44460	330-337-7501
Family Recovery Center Prevention Office	966 North Market Street Lower Level	Lisbon	OH	44432	330-424-0531
Family Recovery Center Renaissance House	855 Newgarden Road	Salem	OH	44460	234-567-4746
Louis Stokes Cleveland VA Medical Center East Liverpool/Calcutta Multi-Specialty Outpatient Clinic	5655 State Route 170 Suite A	Calcutta	OH	43920	330-386-4303
Neil Kennedy Recovery Clinic	2151 Rush Boulevard	Youngstown	OH	44507	330-744-1181 800-228-8287
New Start Treatment Center St. Joseph Warren Hospital	1296 Tod Avenue NW Suite 205	Warren	OH	44485	330-306-5010
Trinity Health System Behavioral Medical Center Drug and Alcohol Rehabilitation Center	380 Summit Avenue	Steubenville	OH	43952	740-283-7024
<b>Emergency Assistance</b>					
American Red Cross of Lake to River	3530 Belmont Avenue Suite 7	Youngstown	OH	44505	330-392-2551
Catholic Charities Regional Agency Emergency Assistance	319 West Rayen Avenue	Youngstown	OH	44502	330-744-3320 800-670-6089
Christians' Concern of Leetonia	764 Columbia Street	Leetonia	OH	44431	330-427-6827
Salvation Army East Liverpool Corps	413 East 4th Street	East Liverpool	OH	43920	330-385-2086

Agency	Address	City	State	Zip	Phone Number
Salvation Army Salem	1249 North Ellsworth Avenue	Salem	OH	44460	330-332-5624
<b>Food Banks, Pantries, and Programs</b>					
Community Action Agency of Columbiana County	7880 Lincole Place	Lisbon	OH	44432	330-424-7221
Farmers and Hunters Feeding the Hungry Northeast Ohio Chapter					330-424-7221
Making Kids Count	7178 West Boulevard Suite E	Youngstown	OH	44512	330-758-3434
Salem Community Pantry	794 East 3rd Street	Salem	OH	44460	330-332-5166
Second Harvest Food Bank Food Assistance Columbiana County					330-747-2696 330-424-7767
Second Harvest Food Bank of Mahoning Valley BackPack food program		Youngstown	OH	44509	330-792-5522
Second Harvest Food Bank of Mahoning Valley Mobile Pantry Program Fellowship of the Beloved	13696 Bethesda Road	Hanoverton	OH	44423	
Salvation Army East Liverpool Corps	413 East 4th Street	East Liverpool	OH	43920	330-385-2086
Salvation Army Salem	1249 North Ellsworth Avenue	Salem	OH	44460	330-332-5624
Waystation	125 W. 5 <sup>th</sup> Street	East Liverpool	OH	43920	330-932-0353
<b>Free or Low-Cost Clinics</b>					
Columbiana County Health District	7360 State Route 45	Lisbon	OH	44432	330-424-0272
Community Action Agency East Liverpool Campus Building #1	16480 St. Clair Ave.	East Liverpool	OH	43920	330-386-7777
Community Action Agency East Liverpool Campus Building #2	16494 St. Clair Ave.	East Liverpool	OH	44432	330-386-7870
Community Action Agency Health & Behavioral Health Center at Lisbon	7880 Lincole Place	Lisbon	OH	44432	330-424-5686
Community Action Agency Dental Center at Lisbon	38722 Saltwell Road	Lisbon	OH	44432	330-424-4192
Community Action Agency Health and Dental Center at Melhorn, Salineville	103 West Main Street	Salineville	OH	43945	330-679-2640
The Dental Van East Liverpool Department of Health (at the Community Resource Center twice a month)	940 Pennsylvania Avenue	East Liverpool	OH	43920	Call for Appointment: 330-385-1301
Quota Club International of Salem, Inc. Salem Area Speech and Hearing Clinic		Salem	OH	44460	330-337-8136
<b>Home Care</b>					
Columbiana County Senior Services Levy Board	7989 Dickey Drive	Lisbon	OH	44432	330-420-6695



Agency	Address	City	State	Zip	Phone Number
Community Caregivers	888 Boardman-Canfield Road Suite D	Boardman	OH	44512	330-533-3427
OVHH- Katie Hughes, Director of Home Health Services	15549 State Route 170, Suite 7	East Liverpool	OH	43920	330-385-2333
Home Care Advantage, Inc.	718 East 3rd Street Suite C	Salem	OH	44460	330-337-HOME (4663)
mvi HomeCare & mvi Hospice Care (Salem)	2350 East State Street	Salem	OH	44460	330-332-1272
mvi HomeCare (Youngstown)	4891 Belmont Avenue	Youngstown	OH	44505	330-759-9487 800-449-4684
Salem Area Visiting Nurse Association	718 East 3rd Street Suite A	Salem	OH	44460	330-332-9986 800-879-6070
<b>Hospice</b>					
All Caring Hospice	6715 Tippecanoe Road Suite B-101	Canfield	OH	44406	330-286-3435 855-286-3435
Grace Hospice Ohio	7206 Market Street	Youngstown	OH	44512	330-729-2924
Hospice of the Valley Columbiana County	2388-B Southeast Boulevard	Salem	OH	44460	330-337-3182
Hospice of the Valley The Hospice House	9803 Sharrott Road	Poland	OH	44514	330-549-5850
mvi HomeCare & mvi Hospice Care (Salem)	2350 East State Street	Salem	OH	44460	330-332-1272
<b>Hospitals</b>					
Akron Children's Hospital in Boardman	6505 Market Street	Boardman	OH	44512	330-746-8040
Aultman Alliance Community Hospital	200 East State Street	Alliance	OH	44601	330-596-6000
East Liverpool City Hospital	425 W 5 <sup>th</sup> Street	East Liverpool	OH	43920	330-385-7200
Mercy Health- Boardman	8401 Market Street	Boardman	OH	44512	330-729-2929
Mercy Health- Youngstown	1044 Belmont Avenue	Youngstown	OH	44501	330-746-7211
Salem Regional Medical Center	1995 East State Street	Salem	OH	44460	330-332-1551
The Surgical Hospital at Southwoods	7630 Southern Blvd.	Boardman	OH	44512	330-729-8000
<b>Hotline &amp; Resource Numbers</b>					
AIDS National Hotline					800-342-2437
AIDS Treatment Information Services					800-448-0440
Alcoholics Anonymous Youngstown Area Intergroup	3373 Canfield Road	Youngstown	OH	44511	330-270-3000
AI-Anon Family Group Headquarters, Inc.					800-356-9996
AI-Anon/Alateen Hotline					800-344-2666
Alzheimer's Association					800-272-3900
American Cancer Society					800-227-2345
American Lung Association					800-548-8252
American Red Cross of Lake to River	3530 Belmont Avenue Suite 7	Youngstown	OH	44505	330-392-2551
Autism Society					800-328-8476
Gay & Lesbian National Hotline					888-843-4564

Agency	Address	City	State	Zip	Phone Number
Gay, Lesbian, Bisexual, and Transgender (GLBT) Youth Support Line					800-850-8078
HelpNetworkNEO					*211
National Adolescent Suicide Hotline					800-621-4000
National Alcoholism and Substance Abuse Information Center					800-784-6776
National Child Abuse Hotline					800-4-A-CHILD
National Cocaine Hotline					800-COCAINE
National Domestic Violence Hotline					800-799-7233 TTY: 800-787-3224
National Heroin Hotline					800-9-HEROIN
National Runaway Hotline					800-621-4000
National Suicide Prevention Lifeline					800-273-8255
National Teen Dating Abuse Hotline					866-331-9474
National Youth Crisis Hotline					800-HIT-HOME
Panic Disorder Information Hotline					800-64-PANIC
Poison Control					800-222-1222
Substance Abuse and Mental Health Services Administration National Helpline					800-784-6776
Suicide Hotline Community Resources Information					330-424-7767 1-800-427-3606 or *211
Vet2Vet Veteran's Crisis Line					877-838-2838
Veterans Crisis Line					800-273-8255 and Press 1
Warmline- Columbiana County					330-385-7000 hours M-F 8A-4P
<b>Housing Assistance</b>					
Catholic Charities Regional Agency Housing Counseling	319 West Rayen Avenue	Youngstown	OH	44502	330-744-3320 800-670-6089
Community Action Agency of Columbiana County	7880 Lincole Place	Lisbon	OH	44432	330-424-7221
Family & Community Services, Inc.	705 Oakwood Street Suite 221	Ravenna	OH	44266	330-297-7027
Habitat for Humanity of Northern Columbiana County	468 Prospect Street	Salem	OH	44460	330-337-1003
<b>Medical and Dental Care Services</b>					
Adult Endocrinology-Saira Mammen, M.D.	St. Clair Ave. Suite 2	East Liverpool	OH	43920	330-385-9670
Akron Children's Hospital Beeghly Campus	6505 Market Street	Boardman	OH	44512	330-746-8100
Akron Children's Hospital Pediatrics East Liverpool	15655 State Route 170	East Liverpool	OH	43920	330-385-1477

Agency	Address	City	State	Zip	Phone Number
Akron Children's Hospital Pediatrics Lisbon	330 North Market Street	Lisbon	OH	44432	330-424-9866
American Cancer Society Reach to Recovery	525 North Broad Street	Canfield	OH	44406	Regional Office: 888-227-6446 National Cancer Information Center: 800-227-2345
American Heart Association Great Rivers Affiliate: Youngstown Metro	840 Southwestern Run	Youngstown	OH	44514	330-965-9230
Arthritis Foundation, Great Lakes Region, Northeastern Ohio Chapter	4630 Richmond Road Suite 240,	Cleveland	OH	44128	800-245-2275 Ext. 114
Belmont Pines Hospital Children's Behavioral Health Hospital and Residential Treatment Center	615 Churchill-Hubbard Road	Youngstown	OH	44505	330-759-2700 800-423-5666
Community Action Agency East Liverpool Campus Building #1	16480 St. Clair Ave.	East Liverpool	OH	43920	330-386-7777
Community Action Agency East Liverpool Campus Building #2	16494 St. Clair Ave.	East Liverpool	OH	44432	330-386-7870
Community Action Agency Health & Behavioral Health Center at Lisbon	7880 Lincole Place	Lisbon	OH	44432	330-424-5686
Community Action Agency Dental Center at Lisbon	38722 Saltwell Road	Lisbon	OH	44432	330-424-4192
Community Action Agency Health and Dental Center, Melhorn, Salineville	103 West Main Street	Salineville	OH	43945	330-679-2640
Columbiana County General Health District	7360 State Route 45	Lisbon	OH	44432	330-424-0272
Columbiana County General Health District Cancer Detection Clinic	7360 State Route 45	Lisbon	OH	44432	330-424-0272
Columbiana Medical Center affiliated with Salem Regional Medical Center	750 East Park Avenue	Columbiana	OH	44408	330-482-3871
Easter Seals of Mahoning, Trumbull, and Columbiana - J. Ford Crandall Rehabilitation Center - Youngstown Hearing and Speech Center	299 Edwards Street	Youngstown	OH	44502	330-743-1168
East Liverpool City Health District	126 West 6th Street	East Liverpool	OH	43920	330-385-5123
East Liverpool City Hospital (See website for a full list of services: <a href="http://www.elch.org">http://www.elch.org</a> )	425 West 5th Street	East Liverpool	OH	43920	330-385-7200
Family Practice- Dr. Rikita Sharma, M.D.	TBA	East Liverpool	OH	43920	
Healthy Start & Healthy Families Columbiana Columbiana County Department of Jobs & Family Services	7989 Dickey Drive Suite 2	Lisbon	OH	44432	330-424-1471
Salem City Health District	230 North Lincoln Avenue #104	Salem	OH	44460	330-332-1618

Agency	Address	City	State	Zip	Phone Number
Salem Regional Medical Center (See website for a full list of services: <a href="http://www.salemregional.com">www.salemregional.com</a> )	1995 E. State Street	Salem	OH	44460	330-332-1551
Louis Stokes Cleveland VA Medical Center East Liverpool/Calcutta Multi-Specialty Outpatient Clinic	5655 State Route 170 Suite A	Calcutta	OH	43920	330-386-4303
Premier Health-Alliance	22792 Harrisburg Westville Rd	Alliance	OH	44601	330-823-4000
Premier Health-Sebring	116 South 15 <sup>TH</sup> St	Sebring	OH	44672	330-938-9920
Salem Area Visiting Nurse Association	718 East 3rd Street Suite A	Salem	OH	44460	330-332-9986 800-879-6070
Sleep Clinic-Dr. Aziz	16218 St. Clair Ave.	East Liverpool	OH	43920	330-382-9355
SRMC at Firestone Farms	116 Carriage Drive Town Center at Firestone Farms	Columbiana	OH	44408	330-482-3871
SRMC Primary Care-Lisbon	38506 Saltwell Road	Lisbon	OH	44432	330-424-1404
SRMC Primary Care-Damascus	28885 US 62	Damascus	OH	44619	330-537-4661
Wound Healing Center	Salem Regional Medical Center 1995 East State Street	Salem	OH	44460	330-332-7415
Wound Care Clinic	425 West 5 <sup>th</sup> Street	East Liverpool	OH	43920	330-386-5870
<b>Nutrition</b>					
Community Action Agency of Columbiana County Elderly Nutrition Program	7880 Lincole Place	Lisbon	OH	44432	330-424-7221
Community Resource Center	940 Pennsylvania Avenue	East Liverpool	OH	43920	330-385-1301
East Liverpool City Hospital Dietician- Debra Wick, RD	425 West Fifth Street	East Liverpool	OH	43920	330-386-2079
<b>Recreation</b>					
Beaver Creek State Park	12021 Echo Dell Rd.	East Liverpool	OH	43920	330-385-3091
Boy Scouts of America Buckeye Council	2301 13th Street NW	Canton	OH	44708	330-580-4272 800-589-9812
Camp Fire Tayanoka		East Liverpool	OH	43920	330-385-0645
The Firestone Pool	338 East Park Avenue	Columbiana	OH	44408	330-482-1026
Girl Scouts of North East Ohio Youngstown	8580 South Avenue	Youngstown	OH	44514	330-652-5876 800-852-4474
Salem Community Center	1098 North Ellsworth Avenue	Salem	OH	44460	330-332-5885
Salem Worlds War Memorial Building	785 East State Street	Salem	OH	44460	330-332-5512
Scenic Vista Park	11523 Township Hwy 764	Lisbon	OH	44432	330-424-9078
Thompson Park	2626 Park Way	East Liverpool	OH	43920	330-385-2255
<b>Senior Services</b>					

Agency	Address	City	State	Zip	Phone Number
Area Agency on Aging 11	5555 Youngstown Warren Road Suite 2685	Niles	OH	44446	800-686-7367
Catholic Charities Senior Center	600 East 4th Street	East Liverpool	OH	43920	330-385-4732
Ceramic City Senior Center	600 East 4th Street	East Liverpool	OH	43920	330-385-4732
Community Action Agency of Columbiana County Elderly Nutrition Program	7880 Lincole Place	Lisbon	OH	44432	330-424-7221
Columbiana County Senior Services Levy Board	7989 Dickey Drive	Lisbon	OH	44432	330-420-6695
Columbiana County Department of Job & Family Services	7989 Dickey Drive Suite 2	Lisbon	OH	44432	330-424-1471
Columbiana Meals on Wheels	865 East Park	Columbiana	OH	44408	330-482-0366
Columbiana Metropolitan Housing Authority	325 Moore Street	East Liverpool	OH	43920	330-386-5970
Community Caregivers	888 Boardman-Canfield Road Suite D	Boardman	OH	44512	330-533-3427
Community Resource Center	940 Pennsylvania Avenue	East Liverpool	OH	43920	330-385-1301
Counseling Center of Columbiana County	40722 State Route 154	Lisbon	OH	44432	330-424-9573
Counseling Center of Columbiana County- East Liverpool Branch Office	15613 Pineview Drive Suite A	East Liverpool	OH	43920	330-386-9004
Counseling Center of Columbiana County Salem Branch Office	188 North Lincoln Avenue	Salem	OH	44460	330-332-1514
Direction Home of Northeast Ohio	1030 N. Meridian Rd	Youngstown	OH	44509	330-505-2300 800-686-7367
Family & Community Services, Inc. Medication Assistance Program (MAP)	705 Oakwood Street Suite 221	Ravenna	OH	44266	330-297-7027
Family & Community Services, Inc. R.S.V.P. (Retired Senior Volunteer Program)		Lisbon	OH	44432	330-424-7877
Home Care Advantage, Inc.	718 East 3rd Street Suite C	Salem	OH	44460	330-337-HOME (4663)
Lifeline- East Liverpool City Hospital Women's Auxiliary	425 West Fifth Street	East Liverpool	OH	43920	330-386-2003
Mobile Meals of Salem, Inc.	1995 East State Street	Salem	OH	44460	330-332-2160
mvi HomeCare & mvi Hospice Care (Salem)	2350 East State Street	Salem	OH	44460	330-332-1272
mvi HomeCare (Youngstown)	4891 Belmont Avenue	Youngstown	OH	44505	330-759-9487 800-449-4684
Quota Club International of Salem, Inc. Salem Area Speech and Hearing Clinic		Salem	OH	44460	330-337-8136
Salem Area Adult Daycare Center Salem Area Visiting Nurse Association	718 East 3rd Street Suite B	Salem	OH	44460	330-332-9986 800-879-6070
Salem Area Visiting Nurse Association	718 East 3rd Street Suite A	Salem	OH	44460	330-332-9986 800-879-6070

Agency	Address	City	State	Zip	Phone Number
Salem Community Center Silver & Fit	1098 North Ellsworth Avenue	Salem	OH	44460	330-332-5885
Salem Worlds War Memorial Building	785 East State Street	Salem	OH	44460	330-332-5512
Senior Center of Mahoning County	1110 5th Avenue	Sebring	OH	44672	330-744-5071
Senior Link Adult Day Services	16351 State Route 267	East Liverpool	OH	43920	330-385-5111
Social Security Office East Liverpool	120 East 4th Street	East Liverpool	OH	43920	800-772-1213
Wellsville Area Resource Center	1335 Main Street	Wellsville	OH	43968	330-532-4507
<b>Shelters</b>					
Catholic Charities Regional Agency Christina House (undisclosed domestic violence shelter)					24 hr. Crisis Line: 330-420-0037
Community Action Agency of Columbiana County Homeless Prevention Program	7880 Lincole Place	Lisbon	OH	44432	330-424-5686
<b>Support Groups</b>					
Autism Support Group East Liverpool City Hospital	425 West 5th Street	East Liverpool	OH	43920	330-386-2054
CAUSE (Connection, Autism, Understanding, Support, & Education) Salem Public Library-Quaker Meeting Room	821 East State Street	Salem	OH	44460	330-337-6193
Coping With Cancer SRMC Behavioral Medicine & Wellness Center	2020 East State Street Suite J	Salem	OH	44460	330-337-4935
Families Coping with Cancer SRMC Behavioral Medicine & Wellness Center	2020 East State Street Suite J	Salem	OH	44460	330-337-4935
Heroes & Halos	P.O. Box 392	Columbiana	OH	44408	
HIV Support Group Counseling Center of Columbiana County	260 West Lincoln Way	Lisbon	OH	44432	330-424-0604
Support Meeting- Salem Methodist Church	244 South Broadway Ave.	Salem	OH	44460	
Survivors of Suicide Support Group Meets at Columbiana County Counseling Center	40722 State Route 154	Lisbon	OH	44432	330-747-5111
<b>Transportation</b>					
Ambulance Service Inc. Ambulette Service	231 Webber Way	East Liverpool	OH	43920	330-385-4903
CARTS (Community Action Rural Transit System)	7880 Lincole Place	Lisbon	OH	44432	330-424-4015
Life Team EMS Ambulette Services	740 Dresden Ave.	East Liverpool	OH	43920	330-396-5505
<b>Women's Health</b>					
The Center for Women	4139 Boardman- Canfield Road	Canfield	OH	44406	330-702-1281

Agency	Address	City	State	Zip	Phone Number
Columbiana County Health District- Cancer Detection Clinic (screenings)	7360 State Route 45	Lisbon	OH	44432	330-424-0272
Community Action Agency of Columbiana County Community Health Center-East Liverpool	16687 Saint Clair Avenue Suite 203	East Liverpool	OH	43920	330-386-7777
Community Action Agency of Columbiana County Community Health Center-Lisbon	7880 Lincole Place	Lisbon	OH	44432	330-424-5686
Community Action Agency of Columbiana County Salineville Community Health Center at Melhorn	103 West Main Street	Salineville	OH	43945	330-679-2640
East Liverpool City Hospital OB/GYN Heather Hissom, WHNP. OB/GYN	16761 St. Clair Avenue Suite #2	East Liverpool	OH	43920	330-385-9670
Gynecology- Constantine G. Economus, M.D.	2020 East State Street, Suite G	Salem	OH	44460	330-884-2400
Louis Stokes Cleveland VA Medical Center East Liverpool/Calcutta Multi-Specialty Outpatient Clinic	5655 State Route 170 Suite A	Calcutta	OH	43920	330-386-4303